

# nUE MEGA+

BANGNA







## A fashionable lifestyle in East Bangna, Bangkok

Nue Mega is located in Bangna, the beginning of Bangkok's Eastern Economic Corridor, and is next to MEGA BANGNA, the biggest shopping mall in Southeast Asia. With connections to the BTS Bangna station, the airport, and the upcoming LRT line's Kanchanapisek station, the geographic location is unique in the region. The property boasts the best clubhouse in the area, with a total of 38 types of amenities across 5 floors, giving residents an exclusive experience.





Skyview Blu Lagoon



Co-Creative Space & Tutoring Room



Game Room

# Facilities

## G/F

- Garden Pavilion
- Greenery Lane
- Active Trail
- Greenery & Sensory Park
- Lobby & Co-Hall
- Smart Locker & Mailroom
- NUE Grab & Go Station
- 24/7 Snack Station
- Laundry Station
- EV Charging Station
- Bicycle & Motorcycle Parking

## 7/F

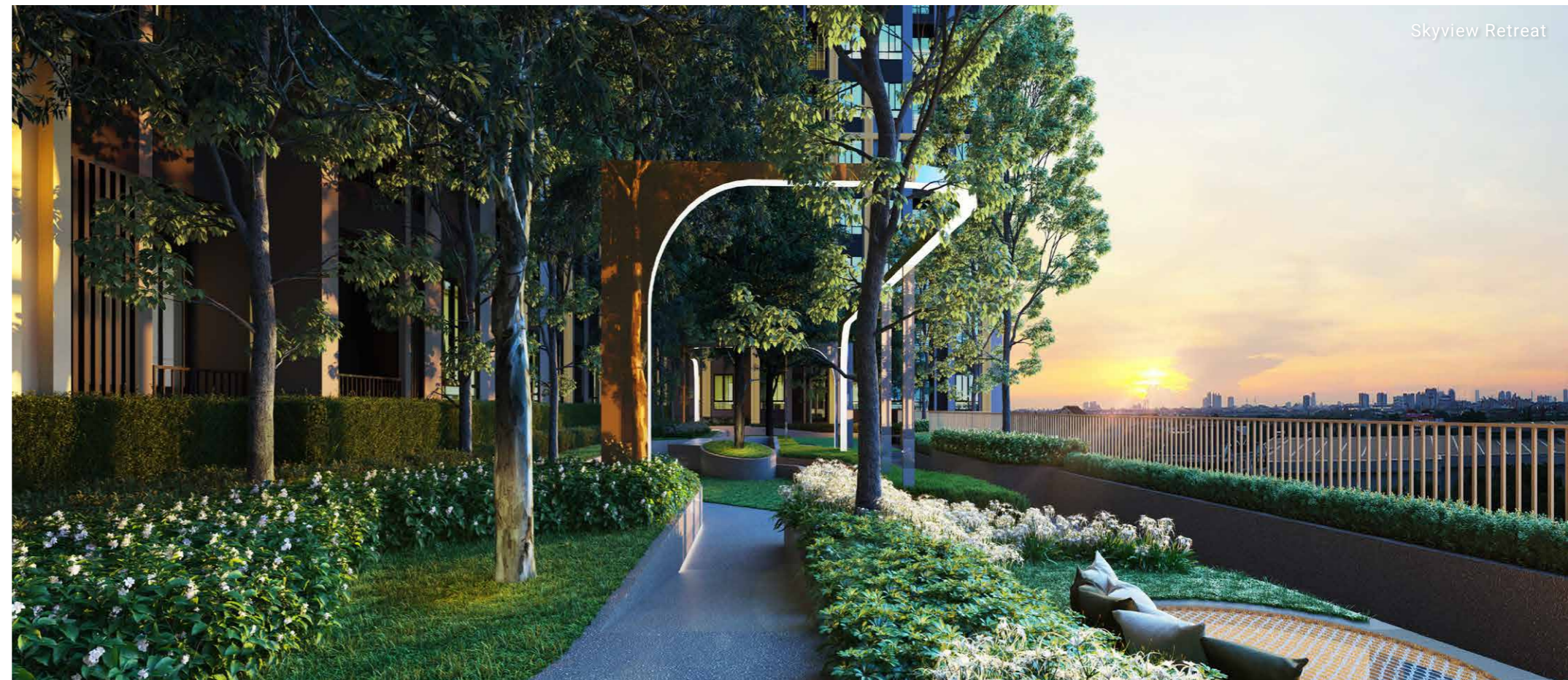
- Breeze Court
- Readery Deck
- Secret Balcony

## 37/F

- Sky Mega Gymnasium
- Sky High Yoga
- The Cloud Caterier Club
- Co-Kitchen & Bar
- Sky Lounge
- Game Room
- Private Dining
- Skyview Blu Lagoon
- Shallow Pool
- Jacuzzi Pool
- Kinder Pool
- Pool Terrace
- Sit n Chill Terrace
- Kids Playscape

## 38/F

- Co-Creative Space & Tutoring Room
- Sky Forum
- Cinema Studio
- Skyview Retreat
- Sunset View Deck
- Rooftop Greenscape

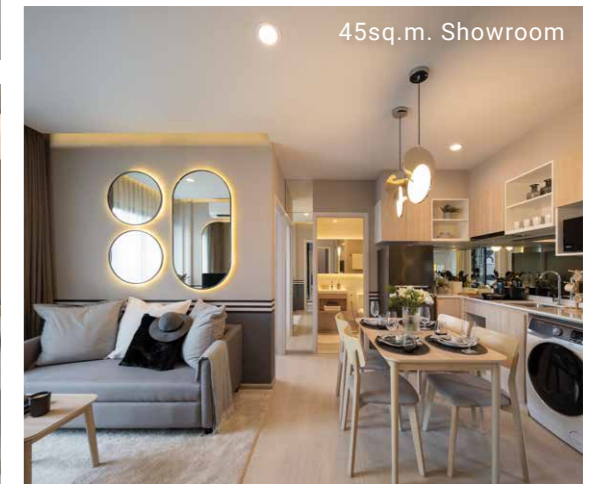
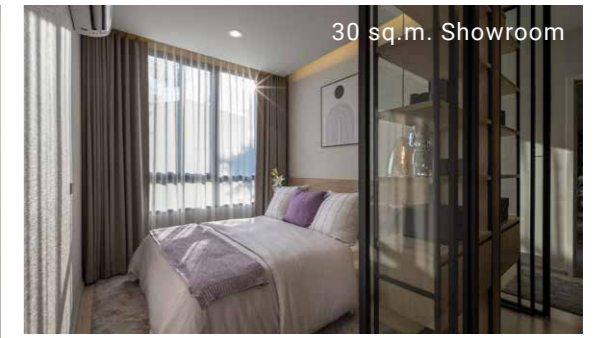


Skyview Retreat



# Floor Plan

# Unit Plan



S18 | Studio 22.42 sq.m.



A16 | 1 Bed (S) 26.25 sq.m.



A14 | 1 Bed (L) 30.46 sq.m.



B19 | 2 Beds 34.80 sq.m.



B6 | 2 Beds 45.83 sq.m.



C2 | 3 Beds 66.72 sq.m.

(Allocated to different units according to the balconies on different floors)

# NUE MEGA+

## BANGNA

A fashionable lifestyle in East Bangna, Bangkok



- Shopping Mall
- Restaurant
- Hospital
- Commercial
- Leisure
- Education

### Project Developer

Noble Development PCL  
Continental City Company Limited

### Project Location

Bang Kaeo, Bang Phli, Samut Prakan

### Building

1 Building  
38 Storey (1,005 Units)

### Management Fee

THB 55 / sq.m. / month (1-year pay in advance)

### Sinking Fund

THB 500 / sq.m. (one-off payment during transfer)

### Parking

35% parking slots (double parking excluded)

### Completion

Completed in January 2025

### Unit Type

Studio : 21.41 – 22.42 sq.m.  
1 Bed (M) : 26.25 – 29.39 sq.m.  
1 Bed (L) : 30.43 – 34.06 sq.m.  
1 Bed Plus : 34.80 – 44.62 sq.m.  
2 Beds : 45.83 – 45.93 sq.m.  
2 Beds Plus : 66.72 sq.m.

noble



弘捷國際  
Fulcrum Global



Explore More Projects

Nue Mega Plus Bangna Condominium Project : Owned and operated by Continental City Company Limited. Office Address: NOBLE Building, 1035 Ploenchit Rd., Lumpini, Pathumwan, Bangkok 10330. Project Location: Land title deed no. 185785, 185786, 185787, 185788, 185789 and 185790 total 6 title deeds Bang Kaeo, Bang Phli, Samut Prakan. Project's land area: Approximately 3-2-49 Rais. The Project is in the process of seeking approval on the environmental impact assessment report, Construction is expected to be started in July 2022 and to be completed in January 2025. Remark: Reserve the right to change all information without prior notice. Simulated image for commercial use only.